

GRÜNIQ



About GRÜNIQ

Aiming for a green future with sustainable energy being accessible to everyone, GRÜNIQ was founded and based in Germany.

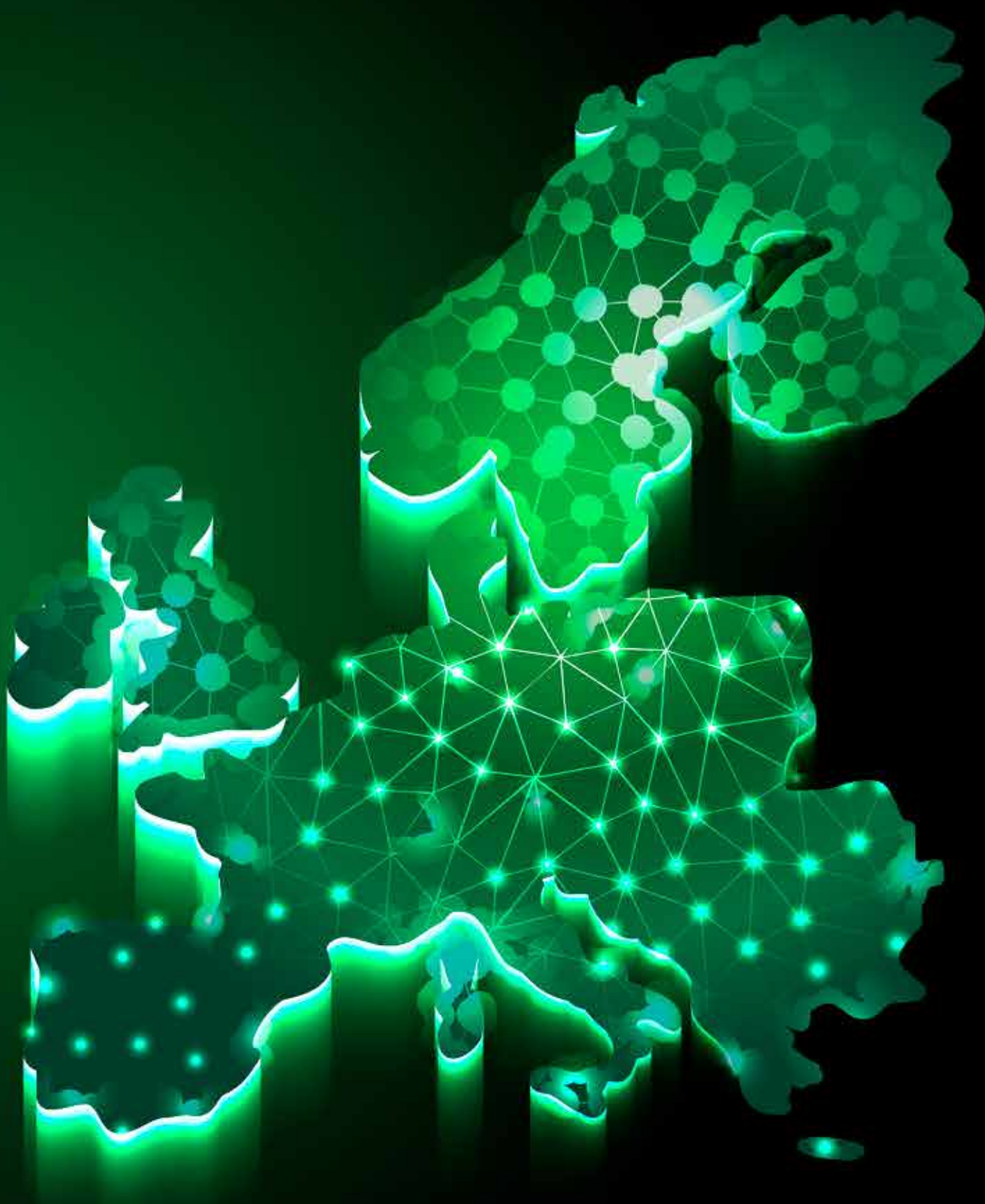
Inevitably, soaring energy prices make it more lucrative to switch to renewable energy and benefit from our infinite energy resource; the sun.

We at GRÜNIQ share a common passion which actively supports the energy transition for a clean future.

Driven by innovative ideas, we are working progressively on the development of advanced products.

Thus, our focus is on sustainable energy products that are based on efficient energy generation and storage systems.

Since customer satisfaction and sustainability are GRÜNIQ's ultimate goals, we assign great importance to high-quality and durable products. We are committed to creating energy independence which thereby enables everyone to contribute in a greener future that provides a tomorrow-worth living for our children.



Compatible Inverters: All inverters with lithium functions



GR12-100N

Grüniq LiFePO₄ Lithium battery

Standard Capacity: 100AH

Rated Voltage: 12.8V

Power: 1.28kWh

BMS: Battery Management System

Life Cycle: > 6000 Cycles



Model	GR12-100N		Battery	Cell Type	Life PO ₄ Battery/LFP
	Nominal Capacity	100Ah		Storage Temperature Range	Short-Term -20°C-40°C (Within 1 month)
Basic Specifications	Nominal Voltage	12V(12.8V)			Long-term 10°C-35°C (Within 1 year)
	Electricity(kWh)	1.28kWh		Operating Temperature Range	-15°C-60°C
	Full charge Voltage	14.4V-15V		Recommended Temperature Range	10°C-40°C
Input	Maximum Charging Voltage	25V		Storage Humidity	≤75% RH
	Input Voltage Range	15V-30V		Atmospheric Pressure	Below 5000 Above Sea Level
	Continuously Use Input Current	80A		Self-Discharge (25°)	<3%/Month
	Maximum Solar Panel Input Current	80A		Depth of Discharge	>80%
	Rshoot delay protection	1000ms		C-rate Discharge	<0.8C
Output	Continuously Use Output Current	80A	Other	Life Cycle	> 6000 Cycles
	Discharge Cut-off Voltage	10V-12V		Certification Standards	UN38.3/CE/MSDS/DGM
	Over-Discharge Delay Protection	1000ms		Warranty	5 years
	Short Circuit Protection Delay	300us		Product Size	505±2×145±2×188±2mm
	Short Circuit Protection Recovery	Disconnect Load		Packing Size	585±5×230±5×280±5mm
	Instant Start Current	400A			
	Instant Start Current Time	10S			



GR12-200N

Grüniq LiFePO₄ Lithium battery

Standard Capacity: 200AH

Rated Voltage: 12.8V

Power: 2.56kWh

BMS: Battery Management System

Life Cycle: > 6000 Cycles



Model	GR12-200N		Battery	Cell Type	Life PO ₄ Battery/LFP
	Nominal Capacity	200Ah		Storage Temperature Range	Short-Term -20°C-40°C (Within 1 month) Long-term 10°C-35°C (Within 1 year)
	Nominal Voltage	12V(12.8V)		Operating Temperature Range	-15°C-60°C
	Electricity(kWh)	2.56kWh		Recommended Temperature Range	10°C-40°C
Basic Specifications	Full charge Voltage	14.4V-15V	Input	Storage Humidity	≤75% RH
	Maximum Charging Voltage	25V		Atmospheric Pressure	Below 5000 Above Sea Level
	Input Voltage Range	15V-30V		Self-Discharge (25°)	<3%/Month
	Continuously Use Input Current	100A		Depth of Discharge	>80%
Input	Maximum Solar Panel Input Current	100A	Output	C-rate Discharge	<0.8C
	Rshoot Delay Protection	1000ms		Life Cycle	> 6000 Cycles
	Continuously Use Output Current	100A		Certification Standards	UN38.3/CE/MSDS/DGM
	Discharge Cut-off Voltage	10V-12V		Warranty	5 years
Output	Over-Discharge Delay Protection	1000ms	Other	Product Size	495±2×180±2×276±2mm
	Short Circuit Protection Delay	300us		Packing Size	585±5×270±5×355±5mm
	Short Circuit Protection Recovery	Disconnect Load			
	Instant Start Current	400A			
	Instant Start Current Time	10S			



GR24 -100N

Grüniq LiFePO₄ Lithium battery

Standard Capacity: 100AH

Rated Voltage: 25.6V

Power: 2.56kWh

BMS: Battery Management System

Life Cycle: > 6000 Cycles



Model	GR24-100N		Battery	Cell Type	Life PO ₄ Battery/LFP
	Nominal Capacity	100Ah		Storage Temperature Range	Short-Term -20°C-40°C (Within 1 month) Long-term 10°C-35°C (Within 1 year)
	Nominal Voltage	24V(25.6V)		Operating Temperature Range	-15°C-60°C
	Electricity(kWh)	2.56kWh		Recommended Temperature Range	10°C-40°C
Basic Specifications	Full charge Voltage	28.8V-30V	Input	Storage Humidity	≤75% RH
	Maximum Charging Voltage	50V		Atmospheric Pressure	Below 5000 Above Sea Level
	Input Voltage Range	30V-50V		Self-Discharge (25°)	<3%/Month
	Continuously Use Input Current	80A		Depth of Discharge	> 80%
Input	Maximum Solar Panel Input Current	80A	Output	C-rate Discharge	<0.8C
	Rshoot delay protection	1000ms		Life Cycle	> 6000 Cycles
	Continuously Use Output Current	80A		Certification Standards	UN38.3/CE/MSDS/DGM
	Discharge Cut-off Voltage	20V-24V		Warranty	5 years
Output	Over-Discharge Delay Protection	1000ms	Other	Product Size	507±2×258±2×193±2mm
	Short Circuit Protection Delay	300us		Packing Size	595±5×335±5×285±5mm
	Short Circuit Protection Recovery	Disconnect Load			
	Instant Start Current	400A			
	Instant Start Current Time	10S			



GR48 -100N

Grünig LiFePO₄ Lithium battery

Standard Capacity: 100AH

Rated Voltage: 51.2V

Power: 5.12kWh

BMS: Battery Management System

Life Cycle: > 6000 Cycles



Model	GR48-100N		Battery	Cell Type	Life PO ₄ Battery/LFP
	Nominal Capacity	100Ah		Storage Temperature Range	Short-Term -20°C-40°C (Within 1 month) Long-term 10°C-35°C (Within 1 year)
Basic Specifications	Nominal Voltage	48V(51.2V)		Operating Temperature Range	-15 C-60 C
	Electricity(kWh)	5.12kWh		Recommended Temperature Range	10 C-40 C
Input	Full charge Voltage	57.6V-60V		Storage Humidity	≤75% RH
	Maximum Charging Voltage	90V		Atmospheric Pressure	Below 5000 above sea level
Output	Input Voltage Range	60V-100V		Self-Discharge (25°)	<3%/Month
	Continuously Use Input Current	100A		Depth of Discharge	>80%
Other	Maximum Solar Panel Input Current	100A		C-rate Discharge	<0.8C
	Rshoot delay protection	1000ms		Life Cycle	> 6000 Cycles
Output	Continuously Use Output Current	100A	Other	Certification Standards	UN38.3/CE/MSDS/DGM
	Discharge Cut-off Voltage	40V-46V		Warranty	5 years
Output	Over-Discharge Delay Protection	1000ms		Product Size	616±2×356±2×292±2mm
	Short Circuit Protection Delay	300us		Packing Size	680±2×430±2×372±2mm
Output	Short Circuit Protection Recovery	Disconnect load			
	Instant Start Current	300A			
Output	Instant Start Current Time	10S			



GR24 -200S

Grüniq Stackable LiFePO4 Lithium battery

Standard Capacity: 200AH

Rated Voltage: 25.6V

Power: 5.12kWh

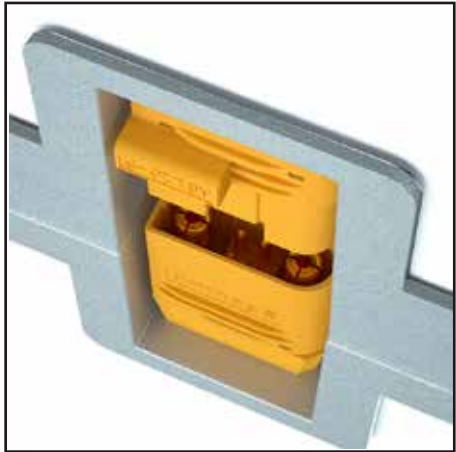
BMS: Battery Management System

Life Cycle: > 6000 Cycles

Battery Cell's type: BYD



CELLS INSIDE



Basic Specifications

Nominal Capacity	200Ah
Nominal Voltage	24V(25.6V)
Electricity(kWh)	5.12kWh

Input

Full charge Voltage	28.8V-30V
Maximum Charging Voltage	50V
Input Voltage Range	30V-50V
Continuously Use Input Current	100A
Maximum Solar Panel Input Current	100A
Rshoot delay protection	1000ms

Output

Continuously Use Output Current	100A
Discharge Cut-off Voltage	20V-24V
Over-Discharge Delay Protection	1000ms
Short Circuit Protection Delay	300us
Short Circuit Protection Recovery	Disconnect load
Instant Start Current	400A
Instant Start Current Time	10S

Battery

Cell type	LiFePO4 Battery/LFP
Storage temperature range	Short-Term -20°C-40°C(Within 1 month) Long-term 10°C-35°C(Within 1 year)
Operating temperature range	-15°C-60°C
Recommended temperature range	10°C-40°C
Storage humidity	≤75% RH
Atmospheric pressure	Below 5000 above sea level
Self-Discharge (25°)	<3%/Month
Depth of discharge	>80%
C-rate Discharge	<0.8C
Life Cycle	>6000 Cycles

Other

Certification standards	UN38.3/CE/MSDS/DGM
Warranty	5 years
Product Size	614±2×507±2×212±2mm
Packing Size	668±2×328±2×706±2mm



GR48 -200S

Grüniq Stackable LiFePO4 Lithium battery

Standard Capacity: 200AH

Rated Voltage: 51.2V

Power: 10.24kWh

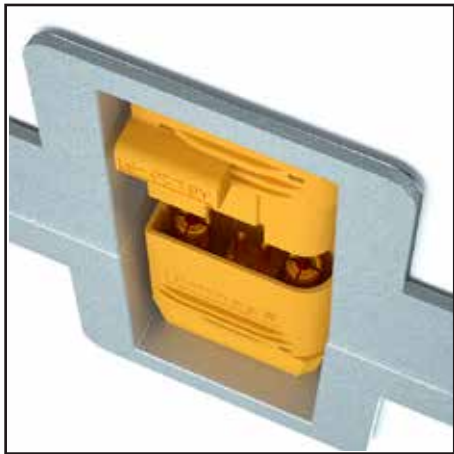
BMS: Battery Management System

Life Cycle: > 6000 Cycles

Battery Cell's type: BYD



CELLS INSIDE



Basic Specifications

Nominal Capacity	200Ah
Nominal Voltage	48V(51.2V)
Electricity(kWh)	10.24kWh

Input

Full charge Voltage	56V-60V
Maximum Charging Voltage	90V
Input Voltage Range	60V-100V
Continuously Use Input Current	100A
Maximum Solar Panel Input Current	100A
Rshoot Delay Protection	1000ms

Output

Continuously Use Output Current	100A
Discharge Cut-off Voltage	38V-48V
Over-Discharge Delay Protection	1000ms
Short Circuit Protection Delay	300us
Short Circuit Protection Recovery	Disconnect load
Instant Start Current	300A
Instant Start Current Time	10S

Battery

Cell type	LiFePO4 Battery/LFP
Storage temperature range	Short-Term -20°C-40°C(Within 1 month) Long-term 10°C-35°C(Within 1 year)
Operating temperature range	-15°C-60°C
Recommended temperature range	10°C-40°C
Storage humidity	≤75% RH
Atmospheric pressure	Below 5000 above sea level
Self-Discharge (25°)	<3%/Month
Depth of discharge	>80%
C-rate Discharge	<0.8C
Life Cycle	>6000 Cycles

Other

Certification standards	UN38.3/CE/MSDS/DGM
Warranty	5 years
Product Size	614±2×507±2×212±2mm
Packing Size	668±2×645±2×713±2mm



GR48-300S

Grüniq Stackable LiFePO4 Lithium battery

Standard Capacity: 300AH

Rated Voltage: 51.2V

Power: 15.36kWh

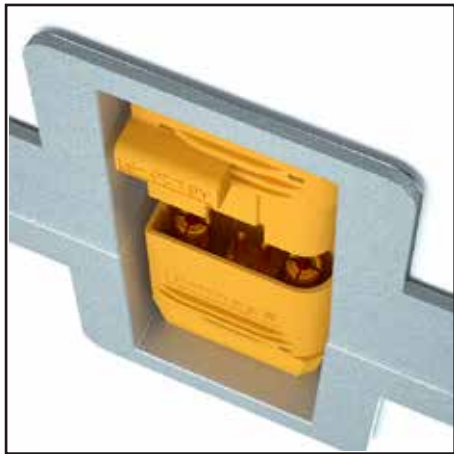
BMS: Battery Management System

Life Cycle: > 6000 Cycles

Battery Cell's type: BYD



CELLS INSIDE



Basic Specifications

Nominal Capacity	300Ah
Nominal Voltage	48V(51.2V)
Electricity(kWh)	15.36kWh

Input

Full charge Voltage	56V-60V
Maximum Charging Voltage	90V
Input Voltage Range	60V-100V
Continuously Use Input Current	100A
Maximum Solar Panel Input Current	100A
Rshoot delay protection	1000ms

Output

Continuously Use Output Current	100A
Discharge Cut-off Voltage	38V-48V
Over-Discharge Delay Protection	1000ms
Short Circuit Protection Delay	300us
Short Circuit Protection Recovery	Disconnect load
Instant Start Current	300A
Instant Start Current Time	10S

Battery

Cell type	LiFePO4 Battery/LFP
Storage temperature range	Short-Term -20°C-40°C(Within 1 month) Long-term 10°C-35°C(Within 1 year)
Operating temperature range	-15°C-60°C
Recommended temperature range	10°C-40°C
Storage humidity	≤75% RH
Atmospheric pressure	Below 5000 above sea level
Self-Discharge (25°)	<3%/Month
Depth of discharge	>80%
C-rate Discharge	<0.8C
Life Cycle	>6000 Cycles

Other

Certification standards	UN38.3/CE/MSDS/DGM
Warranty	5 years
Product Size	614±2×507±2×212±2mm
Packing Size	668±2×645±2×713±2mm



GR12 -200M

Grüniq Wall LiFePO4 Lithium battery

Standard Capacity: 200AH

Rated Voltage: 12V

Power: 2.56kWh

BMS: Battery Management System

Life Cycle: > 6000 Cycles

Battery Cell's type: BYD



CELLS INSIDE



Model	GR12-200M		Battery	Cell type	Life PO ₄ Battery/LFP
	Nominal Capacity	200Ah		Storage temperature range	Short-Term -20°C-40°C (Within 1 month) Long-term 10°C-35°C (Within 1 year)
	Nominal Voltage	12V(12.8V)		Operating temperature range	-15°C-60°C
	Electricity(kWh)	2.56kWh		Recommended temperature range	10°C-40°C
	Full charge Voltage	14.4V-15V		Storage humidity	≤75% RH
	Maximum Charging Voltage	25V		Atmospheric pressure	Below 5000 above sea level
	Input Voltage Range	15V-30V		Self-Discharge (25°)	<3%/Month
	Continuously Use Input Current	100A		Depth of discharge	>80%
	Maximum Solar Panel Input Current	100A		C-rate Discharge	<0.8C
	Rshoot delay protection	1000ms		Life Cycle	> 6000 Cycles
Input	Continuously Use Output Current	100A	Other	Certification Standards	UN38.3/CE/MSDS/DGM
	Discharge Cut-off Voltage	10V-12V		Warranty	5 years
	Over-Discharge Delay Protection	1000ms		Product Size	831±2×540±2×90±2mm
	Short Circuit Protection Delay	300us		Packing Size	895±2×628±2×181±2mm
	Short Circuit Protection Recovery	Disconnect load			
	Instant Start Current	400A			
Output	Instant Start Current Time	10S			



GR12 -250M

Grüniq Wall LiFePO4 Lithium battery

Standard Capacity: 250AH

Rated Voltage: 12V

Power: 3.2kWh

BMS: Battery Management System

Life Cycle: > 6000 Cycles

Battery Cell's type: BYD





Model	GR12-250M			Cell type	Life PO4 Battery/LFP
Basic Specifications	Nominal Capacity	250Ah	Battery	Storage temperature range	Short-Term -20°C-40°C (Within 1 month)
	Nominal Voltage	12V(12.8V)			Long-term 10°C-35°C (Within 1 year)
	Electricity(kWh)	3.2kWh		Operating temperature range	-15°C-60°C
	Full charge Voltage	14.4V-15V		Recommended temperature range	10°C-40°C
Input	Maximum Charging Voltage	25V	Other	Storage humidity	≤75% RH
	Input Voltage Range	15V-30V		Atmospheric pressure	Below 5000 above sea level
	Continuously Use Input Current	100A		Self-Discharge (25°)	<3%/Month
	Maximum Solar Panel Input Current	100A		Depth of discharge	>80%
	Rshoot delay protection	1000ms		C-rate Discharge	<0.8C
	Continuously Use Output Current	100A		Life Cycle	> 6000 Cycles
Output	Discharge Cut-off Voltage	10V-12V	Other	Certification Standards	UN38.3/CE/MSDS/DGM
	Over-Discharge Delay Protection	1000ms		Warranty	5 years
	Short Circuit Protection Delay	300us		Product Size	831±2×540±2×90±2mm
	Short Circuit Protection Recovery	Disconnect load		Packing Size	895±2×628±2×181±2mm
	Instant Start Current	400A			
	Instant Start Current Time	10S			



GR12 -300M

Grüniq Wall LiFePO4 Lithium battery

Standard Capacity: 300AH

Rated Voltage: 12V

Power: 3.84kWh

BMS: Battery Management System

Life Cycle: > 6000 Cycles

Battery Cell's type: BYD



CELLS INSIDE



Model	GR12-300M		Cell type	Life PO ₄ Battery/LFP					
Basic Specifications	Nominal Capacity	300Ah	Storage temperature range	Short-Term -20°C-40°C (Within 1 month)					
	Nominal Voltage	12V(12.8V)		Long-term 10°C-35°C (Within 1 year)					
	Electricity(kWh)	3.84kWh		Operating temperature range	-15°C-60°C				
	Full charge Voltage	14.4V-15V			Recommended temperature range	10°C-40°C			
Input	Maximum Charging Voltage	25V	Storage humidity	≤75% RH					
	Input Voltage Range	15V-30V		Atmospheric pressure	Below 5000 above sea level				
	Continuously Use Input Current	100A			Self-Discharge (25°)	<3%/Month			
	Maximum Solar Panel Input Current	100A				Depth of discharge	>80%		
	Rshoot delay protection	1000ms					C-rate Discharge	<0.8C	
	Continuously Use Output Current	100A						Life Cycle	> 6000 Cycles
Output	Discharge Cut-off Voltage	10V-12V	Certification Standards						UN38.3/CE/MSDS/DGM
	Over-Discharge Delay Protection	1000ms		Warranty					5 years
	Short Circuit Protection Delay	300us			Product Size				831±2×540±2×90±2mm
	Short Circuit Protection Recovery	Disconnect load				Packing Size			895±2×628±2×181±2mm
	Instant Start Current	400A							
	Instant Start Current Time	10S							



GR12 -350M

Grüniq Wall LiFePO4 Lithium battery

Standard Capacity: 350AH

Rated Voltage: 12V

Power: 4.48kWh

BMS: Battery Management System

Life Cycle: > 6000 Cycles

Battery Cell's type: BYD



CELLS INSIDE



Model	GR12-350M		Battery	Cell type	Life PO ₄ Battery/LFP	
Basic Specifications	Nominal Capacity	350Ah		Storage temperature range	Short-Term -20°C-40°C (Within 1 month)	
	Nominal Voltage	12V(12.8V)			Long-term 10°C-35°C (Within 1 year)	
	Electricity(kWh)	4.48kWh			Operating temperature range	-15°C-60°C
	Full charge Voltage	14.4V-15V			Recommended temperature range	10°C-40°C
Input	Maximum Charging Voltage	25V		Storage humidity	≤75% RH	
	Input Voltage Range	15V-30V		Atmospheric pressure	Below 5000 above sea level	
	Continuously Use Input Current	100A		Self-Discharge (25°)	< 3%/Month	
	Maximum Solar Panel Input Current	100A		Depth of discharge	> 80%	
	Rshoot delay protection	1000ms		C-rate Discharge	< 0.8C	
Output	Continuously Use Output Current	100A	Other	Life Cycle	> 6000 Cycles	
	Discharge Cut-off Voltage	10V-12V		Certification Standards	UN38.3/CE/MSDS/DGM	
	Over-Discharge Delay Protection	1000ms		Warranty	5 years	
	Short Circuit Protection Delay	300us		Product Size	831±2×540±2×90±2mm	
	Short Circuit Protection Recovery	Disconnect load		Packing Size	895±2×628±2×181±2mm	
	Instant Start Current	400A				
	Instant Start Current Time	10S				



GR24 -80M

Grüniq Wall LiFePO4 Lithium battery

Standard Capacity: 80AH

Rated Voltage: 24V

Power: 2.048kWh

BMS: Battery Management System

Life Cycle: > 6000 Cycles

Battery Cell's type: BYD



CELLS INSIDE



Model	GR24-80M		Cell Type	Life PO ₄ Battery/LFP		
Basic Specifications	Nominal Capacity	80Ah		Storage Temperature Range	Short-Term -20°C-40°C (Within 1 month)	
	Nominal Voltage	24V(25.6V)	Long-term 10°C-35°C (Within 1 year)			
	Electricity(kWh)	2.048kWh	Operating Temperature Range	-15°C-60°C		
	Full charge Voltage	28.8V-30V		Recommended Temperature range	10°C-40°C	
Input	Maximum Charging Voltage	50V	Battery		Storage Humidity	≤75% RH
	Input Voltage Range	30V-50V		Atmospheric Pressure	Below 5000 above sea level	
	Continuously Use Input Current	100A		Self-Discharge (25°)	<3%/Month	
	Maximum Solar Panel Input Current	100A		Depth of Discharge	>80%	
Output	Rshoot Delay Protection	1000ms	Other	C-rate Discharge	<0.8C	
	Continuously Use Output Current	100A		Life Cycle	> 6000 Cycles	
	Discharge Cut-off Voltage	20V-24V		Certification Standards	UN38.3/CE/MSDS/DGM	
	Over-Discharge Delay Protection	1000ms		Warranty	5 years	
Other	Short Circuit Protection Delay	300us	Product Size	831±2×540±2×90±2mm		
	Short Circuit Protection Recovery	Disconnect load		Packing Size	895±2×628±2×181±2mm	
	Instant Start Current	400A				
	Instant Start Current Time	10S				



www.grueniq.de